

# KIMERA Slitting Machine



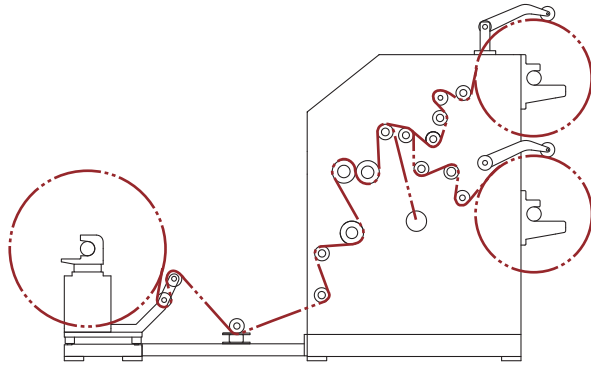
[www.dahbah.com.tw](http://www.dahbah.com.tw)

**DAH BAH**  
QUALITY • PROFESSIONAL • INNOVATION

# Slitting Machine

## Popular & Widely Used

### ■ KIMERA Series



#### Features :

##### Materials

- LLDPE 40-150 $\mu$ , PE; OPP; CPP; PVC; PET 30-150 $\mu$ , BOPP 25-150 $\mu$ , Laminated films 40-150 $\mu$ .

##### Unwinding Section

- Swing-out / Lift-up compatible type  $\phi 3$ " air shaft.
- Equipped with digital type line position control (LPC) to ensure accurate slitting position.

#### Specification :

Model No.	SLF-NT130MU
Min. & Max. Parent Web Width	650 ~ 1300 mm
Max. Parent Web Diameter	800 mm
Unwind / Rewind Core I.D.	3" or 6"
Max. Rewind Diameter	600 mm
Min. & Max. Slit Width	50 ~ 650 mm (Depends on various materials' conditions)
Max. Machine Speed	300 M / min.

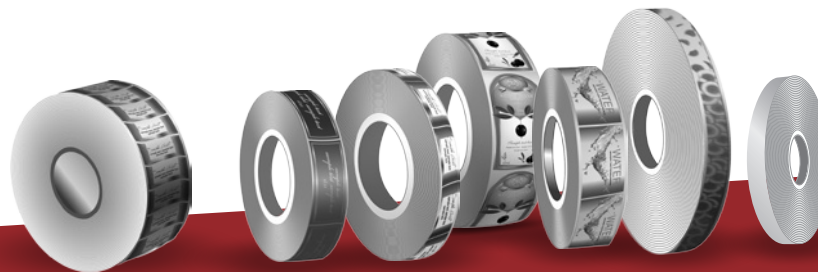
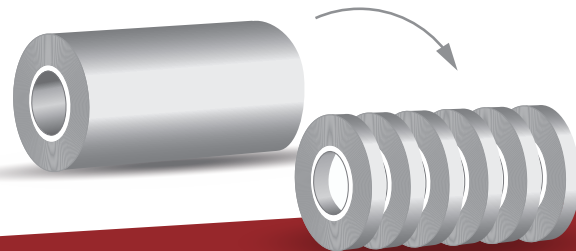
##### Slitting Section

- Equipped with razor cutter and circular shear cutter.
- Equipped with blower and expulsion tube.

##### Rewinding Section

- Swing-out / lift up type  $\phi 3$ " friction shaft make unloading more flexible.
- Automatic tension control system.
- Static eliminating brush equipped.

- The lay-on rollers for pressing the finish rolls are adjustable to meet different materials requirements.
- Equipped with tracking roller system, which can track the changing of the finish rolls diameter and maintain a steady rewind tension to provide stable rewinding and neat edges of finish-rolls.



**DAH BAH**  
QUALITY • PROFESSIONAL • INNOVATION

Add. No. 69-10, Sec. 2, Chung Shin Rd., Tali Dist., Taichung City 412, Taiwan

Tel. +886-4-2483-2477 Fax. +886-4-2483-0852

E-Mail. [dahbah@dahbah.com.tw](mailto:dahbah@dahbah.com.tw) website. [www.dahbah.com.tw](http://www.dahbah.com.tw)

\* The working speed depends on the material condition and slitting width.

\* Due to machine development, above information may change without notice.

Designed By Polaris | 886.4.24517070 | 02.2018