

Enova SLITTING MACHINE



Materials

- Plastic films, such as OPP, PET, CPP, PVC (soft)

Rewinding Type

- Differential center rewinding with duplex rewind shafts

Unwinding Section

- Shaftless type unwinding stand with $\phi 3''$ adapters.
- Equipped with digital type line position control (LPC) to ensure accurate slitting position.



- LPC.

Unwinding Tension Control

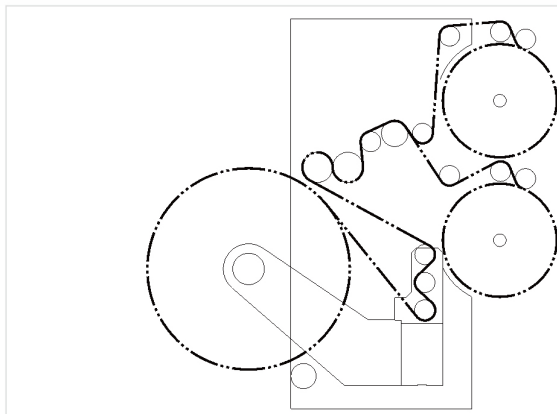
- Equipped with automatic tension controlling system (diameter-calculating type) to provide stable tension.

Slitting Section

- Equipped with razor cutter and cutting in the air.
- Static eliminated brush.

Rewinding Section

- Cantilevered type mechanical rewinding shafts for easy operation.
- Equipped with mechanical quick-lock collars, which not only can facilitate the concentricity of the paper cores and finish rolls, but also can make unloading easier without causing paper dust.
- Equipped with lay-on rollers.
- Unloading device.



Rewinding Tension Control

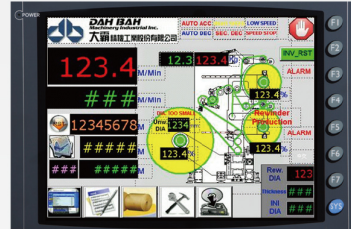
- Equipped with automatic tension controller and load-cells. The actual tension is digitally displayed, increasing the tension control precision with minimal operation effort.

Trimmed Waste

- Equipped with blower and expulsion tube.

Computer Control System With Man-Machine Interface

- Touch-screen makes operation easier and faster.



- Touch screen

- Data base for saving 100 sets of working faster parameters for easy setup or review.
- On Screen Alarm messages are displayed on the screen.
- Operation and maintenance I/O are memorized in the computer control system for easy setup or review.

Optional Accessories

- 6" unwinding adaptors
- Laser core positioning device
- Expanding roller
- Grooved roller for razor cutter
- Trim rewinder with speed synchronizing system



- Trim rewinder

Enova	Net weight	Area required
SLF-T130F	2600kg	L 1800 x W 4000 x H 1600 (mm)
Max. parent web width	600~1300 mm	
Max. parent web diameter	800 mm	
Thickness range	35~150 μ (depends on various materials' conditions)	
Max. rewind diameter	450 mm	
Min. slit width	50~550 mm (depends on various materials' conditions)	
Unwind/rewind core I.D.	3"	
Max. machine speed	300 M/min.	